

# EAS Receipt Roll FAQ Sheet

## What is EAS?

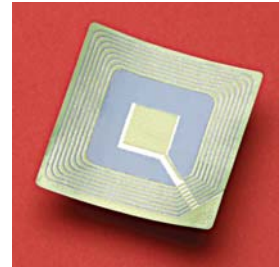
EAS stands for Electronic Article Surveillance. Merchandise is tagged with a special sensing device. When this device gets near special pedestals that send out an electronic signal the tag closes a circuit and sets off an alarm. The pedestals are usually set up at entrances and exits to stores and distribution centers.

## Are there different EAS systems?

There are two primary systems in use by retailers today, one system sold by Sensormatic® and the other sold by Checkpoint®.

## How is the Sensormatic tag inserted into the paper roll?

The EAS tag is adhered to a special plug that is then inserted into the core. This plug is then glued at one end so the plug and tag can not be pulled out. The end of the plug seals the core hole so a person can not look through the core to see if a tag is present.



Nashua is currently developing a product for Checkpoint RF tags.

## Can the tag be turned off?

Yes, the tag can be deactivated just like any other Sensormatic tag. We do not recommend that the tags be deactivated. We plan on offering retailers the option of sending back good cores with live tags so we can recycle them.

## How can retailers take advantage of this program?

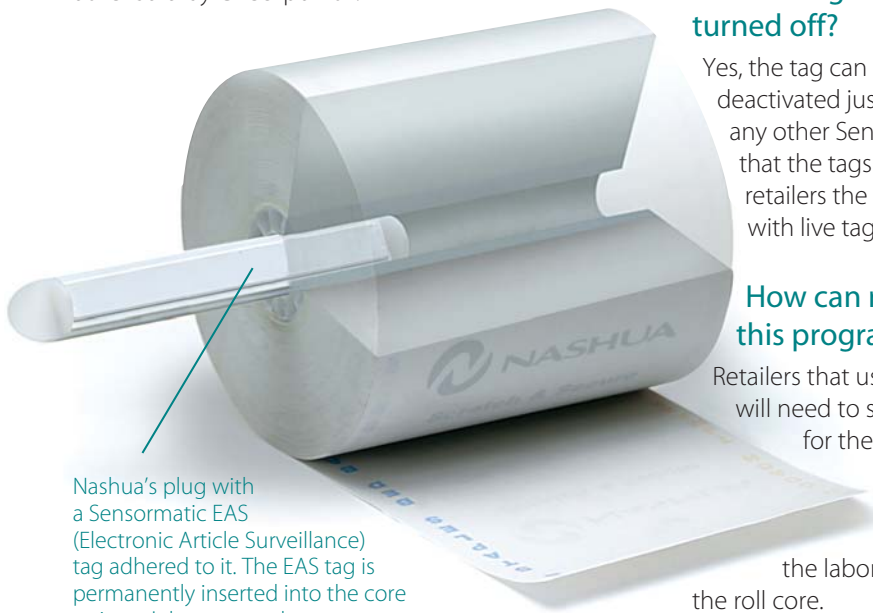
Retailers that use the Sensormatic EAS system will need to send to Nashua their own EAS tags for the quantity of rolls they will be purchasing. These tags will be used for their cores. Nashua will only charge them a small fee to cover the labor of inserting and sealing the tag into the roll core.

## Will this program work for any size core?

There is a limitation on the width of the core. We can only offer this program for rolls that are 2¾" wide or wider. Since most major retailers use cores this size or wider, it should not be a problem.

## How much will the program cost?

There is a \$5.00 per case charge for the EAS tagged cores, the cost drops to \$3.00 per case if the customer supplies us with EAS tags.



Nashua's plug with a Sensormatic EAS (Electronic Article Surveillance) tag adhered to it. The EAS tag is permanently inserted into the core so it can't be removed.

## Are EAS systems and their tags compatible?

No, each system uses a unique technology for their tags and pedestals. Sensormatic uses acousto-magnetic technology and Checkpoint uses RF or radio frequency. Each tag looks different and will only work with their respective systems.

## What does Nashua offer?

At this time Nashua only offers a roll with a Sensormatic tag in it. We plan on offering a product for the Checkpoint system in the future.

